





II.

1978 4 1 가 1999  
 14 가 , 1999 120Ry .  
 505 , 1 .

1. \* (1978. 4. 29 ~ 1998. 12. 31)

		Ry		O/H		(year)
1	78-04-29	15.54	142	18	124	5.15
2	83-07-25	12.98	64	13	51	2.47
3	85-09-30	10.89	46	11	35	2.38
4	86-04-29	10.77	42	10	32	1.91
1	86-08-25	10.46	38	10	28	1.90
2	87-06-10	9.61	34	10	24	1.96
3	95-03-31	3.22	8	3	5	0.54
4	96-01-01	2.66	10	3	7	0.34
1	88-09-10	8.65	29	8	21	1.66
2	98-09-30	8.01	21	9	12	1.25
1	88-09-10	7.99	65	12	53	2.32
2	97-07-01	1.29	6	1	5	0.21
		102.8	505	108	397	22.10

\* 1999 : 13

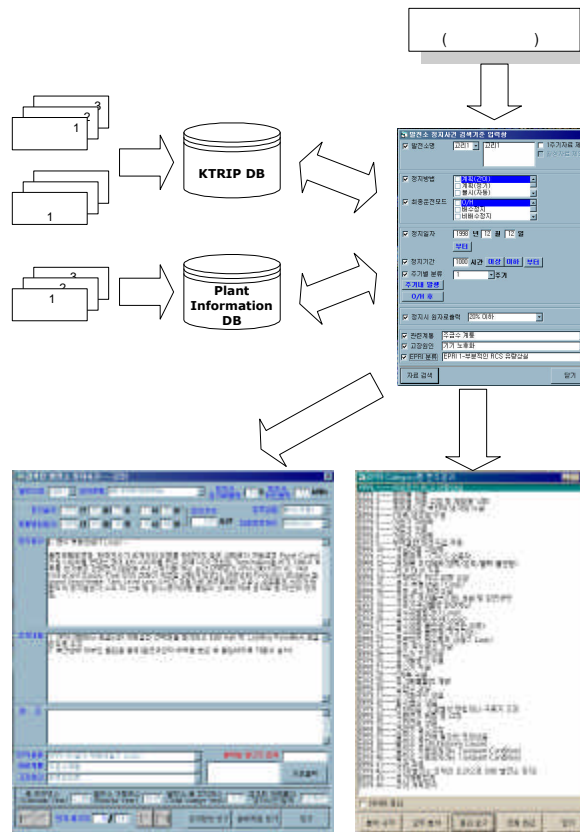
[3-4].

1978 1996 ,  
 1998 , ,  
 1996 1999 .  
 400 가 .  
 , ,  
 3,4  
 3,4

### III. KTRIP

KTRIP

, KTRIP 1 . 1  
 , KTRIP ( , , ..)  
 ( , , ..)  
 가  
 , " 가?" "  
 가 " 가?"  
 KTRIP 가  
 category (EPRI  
 category)  
 가



#### 1. KTRIP

### III.1

1

KTRIP

“KTRIP DB”



#### 4. KTRIP

	KTRIP
	, EPRI category ,
	KTRIP version HTML

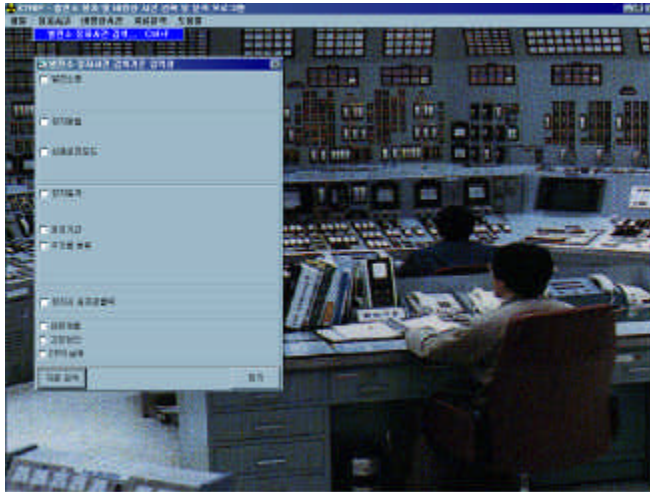


#### 2. KTRIP

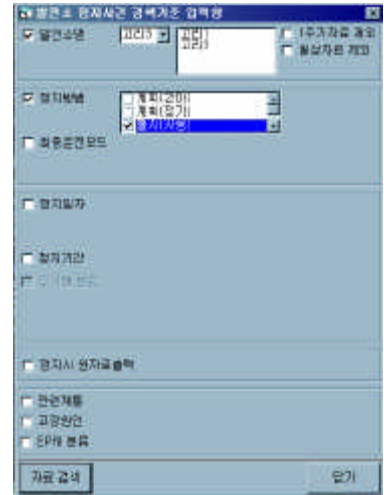
,가 “ ” “ ” “ ” ,  
 . “ ” “ ”  
 .

#### III.2.1

” “ 가 ,  
 3 .  
 가 10 ,  
 check box , 가 ,  
 4 가 3 “ ” check box



3.



4.

III.2.2

가 , " " "KTRIP DB"

5 3

( 46 )



5.

III.2.3

KTRIP "KTRIP DB"

EPRI category / 가 .

6 1

, 7 EPRI

category

7

EPRI category

가

EPRI

category

8

고리1 후기 정지현황 (1978년 04월 25일 부터 1994년 12월 31일 까지)

연도	계획(100%)	계획(%)	실시(%)	실시(100%)	차이(%)	비고
1978년	0.0	1.0	0.0	0.0	1.0	
1979년	0.0	1.0	0.0	0.0	1.0	
1980년	0.0	1.0	0.0	0.0	1.0	
1981년	0.0	1.0	0.0	0.0	1.0	
1982년	0.0	1.0	0.0	0.0	1.0	
1983년	0.0	1.0	0.0	0.0	1.0	
1984년	0.0	1.0	0.0	0.0	1.0	
1985년	0.0	1.0	0.0	0.0	1.0	
1986년	0.0	1.0	0.0	0.0	1.0	
1987년	0.0	1.0	0.0	0.0	1.0	
1988년	0.0	1.0	0.0	0.0	1.0	
1989년	0.0	1.0	0.0	0.0	1.0	
1990년	0.0	1.0	0.0	0.0	1.0	
1991년	0.0	1.0	0.0	0.0	1.0	
1992년	0.0	1.0	0.0	0.0	1.0	
1993년	0.0	1.0	0.0	0.0	1.0	
1994년	0.0	0.9	0.0	0.0	0.9	

6. 1

EPRI 1-부분적인 RCS 누출상입에 대한 분석결과

종기	1주기	2주기	3주기	4주기	5주기	6주기	7주기	8주기	9주기	10주기	11주기	12주기	13주기	14주기	15주기
고리1	0	0	0	0	0	0	0	0	0	0	0	0	0	0	0
고리2	0	0	0	0	0	0	0	0	0	0	0	0	0	0	0
고리3	0	0	0	0	0	0	0	0	0	0	0	0	0	0	0
고리4	0	0	0	0	0	0	0	0	0	0	0	0	0	0	0
양화1	0	0	0	0	0	0	0	0	0	0	0	0	0	0	0
양화2	0	0	0	0	0	0	0	0	0	0	0	0	0	0	0
양화3	0	0	0	0	0	0	0	0	0	0	0	0	0	0	0
양화4	0	0	0	0	0	0	0	0	0	0	0	0	0	0	0
발전1	0	0	0	0	0	0	0	0	0	0	0	0	0	0	0
발전2	0	0	0	0	0	0	0	0	0	0	0	0	0	0	0
발전3	0	0	0	0	0	0	0	0	0	0	0	0	0	0	0
발전4	0	0	0	0	0	0	0	0	0	0	0	0	0	0	0
발전5	0	0	0	0	0	0	0	0	0	0	0	0	0	0	0
발전6	0	0	0	0	0	0	0	0	0	0	0	0	0	0	0
발전7	0	0	0	0	0	0	0	0	0	0	0	0	0	0	0
발전8	0	0	0	0	0	0	0	0	0	0	0	0	0	0	0
발전9	0	0	0	0	0	0	0	0	0	0	0	0	0	0	0
발전10	0	0	0	0	0	0	0	0	0	0	0	0	0	0	0
발전11	0	0	0	0	0	0	0	0	0	0	0	0	0	0	0
발전12	0	0	0	0	0	0	0	0	0	0	0	0	0	0	0
발전13	0	0	0	0	0	0	0	0	0	0	0	0	0	0	0
발전14	0	0	0	0	0	0	0	0	0	0	0	0	0	0	0
발전15	0	0	0	0	0	0	0	0	0	0	0	0	0	0	0
발전16	0	0	0	0	0	0	0	0	0	0	0	0	0	0	0
발전17	0	0	0	0	0	0	0	0	0	0	0	0	0	0	0
발전18	0	0	0	0	0	0	0	0	0	0	0	0	0	0	0
발전19	0	0	0	0	0	0	0	0	0	0	0	0	0	0	0
발전20	0	0	0	0	0	0	0	0	0	0	0	0	0	0	0
발전21	0	0	0	0	0	0	0	0	0	0	0	0	0	0	0
발전22	0	0	0	0	0	0	0	0	0	0	0	0	0	0	0
발전23	0	0	0	0	0	0	0	0	0	0	0	0	0	0	0
발전24	0	0	0	0	0	0	0	0	0	0	0	0	0	0	0
발전25	0	0	0	0	0	0	0	0	0	0	0	0	0	0	0
발전26	0	0	0	0	0	0	0	0	0	0	0	0	0	0	0
발전27	0	0	0	0	0	0	0	0	0	0	0	0	0	0	0
발전28	0	0	0	0	0	0	0	0	0	0	0	0	0	0	0
발전29	0	0	0	0	0	0	0	0	0	0	0	0	0	0	0
발전30	0	0	0	0	0	0	0	0	0	0	0	0	0	0	0
발전31	0	0	0	0	0	0	0	0	0	0	0	0	0	0	0
발전32	0	0	0	0	0	0	0	0	0	0	0	0	0	0	0
발전33	0	0	0	0	0	0	0	0	0	0	0	0	0	0	0
발전34	0	0	0	0	0	0	0	0	0	0	0	0	0	0	0
발전35	0	0	0	0	0	0	0	0	0	0	0	0	0	0	0
발전36	0	0	0	0	0	0	0	0	0	0	0	0	0	0	0
발전37	0	0	0	0	0	0	0	0	0	0	0	0	0	0	0
발전38	0	0	0	0	0	0	0	0	0	0	0	0	0	0	0
발전39	0	0	0	0	0	0	0	0	0	0	0	0	0	0	0
발전40	0	0	0	0	0	0	0	0	0	0	0	0	0	0	0
발전41	0	0	0	0	0	0	0	0	0	0	0	0	0	0	0
발전42	0	0	0	0	0	0	0	0	0	0	0	0	0	0	0
발전43	0	0	0	0	0	0	0	0	0	0	0	0	0	0	0
발전44	0	0	0	0	0	0	0	0	0	0	0	0	0	0	0
발전45	0	0	0	0	0	0	0	0	0	0	0	0	0	0	0
발전46	0	0	0	0	0	0	0	0	0	0	0	0	0	0	0
발전47	0	0	0	0	0	0	0	0	0	0	0	0	0	0	0
발전48	0	0	0	0	0	0	0	0	0	0	0	0	0	0	0
발전49	0	0	0	0	0	0	0	0	0	0	0	0	0	0	0
발전50	0	0	0	0	0	0	0	0	0	0	0	0	0	0	0
발전51	0	0	0	0	0	0	0	0	0	0	0	0	0	0	0
발전52	0	0	0	0	0	0	0	0	0	0	0	0	0	0	0
발전53	0	0	0	0	0	0	0	0	0	0	0	0	0	0	0
발전54	0	0	0	0	0	0	0	0	0	0	0	0	0	0	0
발전55	0	0	0	0	0	0	0	0	0	0	0	0	0	0	0
발전56	0	0	0	0	0	0	0	0	0	0	0	0	0	0	0
발전57	0	0	0	0	0	0	0	0	0	0	0	0	0	0	0
발전58	0	0	0	0	0	0	0	0	0	0	0	0	0	0	0
발전59	0	0	0	0	0	0	0	0	0	0	0	0	0	0	0
발전60	0	0	0	0	0	0	0	0	0	0	0	0	0	0	0
발전61	0	0	0	0	0	0	0	0	0	0	0	0	0	0	0
발전62	0	0	0	0	0	0	0	0	0	0	0	0	0	0	0
발전63	0	0	0	0	0	0	0	0	0	0	0	0	0	0	0
발전64	0	0	0	0	0	0	0	0	0	0	0	0	0	0	0
발전65	0	0	0	0	0	0	0	0	0	0	0	0	0	0	0
발전66	0	0	0	0	0	0	0	0	0	0	0	0	0	0	0
발전67	0	0	0	0	0	0	0	0	0	0	0	0	0	0	0
발전68	0	0	0	0	0	0	0	0	0	0	0	0	0	0	0
발전69	0	0	0	0	0	0	0	0	0	0	0	0	0	0	0
발전70	0	0	0	0	0	0	0	0	0	0	0	0	0	0	0
발전71	0	0	0	0	0	0	0	0	0	0	0	0	0	0	0
발전72	0	0	0	0	0	0	0	0	0	0	0	0	0	0	0
발전73	0	0	0	0	0	0	0	0	0	0	0	0	0	0	0
발전74	0	0	0	0	0	0	0	0	0	0	0	0	0	0	0
발전75	0	0	0	0	0	0	0	0	0	0	0	0	0	0	0
발전76	0	0	0	0	0	0	0	0	0	0	0	0	0	0	0
발전77	0	0	0	0	0	0	0	0	0	0	0	0	0	0	0
발전78	0	0	0	0	0	0	0	0	0	0	0	0	0	0	0
발전79	0	0	0	0	0	0	0	0	0	0	0	0	0	0	0
발전80	0	0	0	0	0	0	0	0	0	0	0	0	0	0	0
발전81	0	0	0	0	0	0	0	0	0	0	0	0	0	0	0
발전82	0	0	0	0	0	0	0	0	0	0	0	0	0	0	0
발전83	0	0	0	0	0	0	0	0	0	0	0	0	0	0	0
발전84	0	0	0	0	0	0	0	0	0	0	0	0	0	0	0
발전85	0	0	0	0	0	0	0	0	0	0	0	0	0	0	0
발전86	0	0	0	0	0	0	0	0	0	0	0	0	0	0	0
발전87	0	0	0	0	0	0	0	0	0	0	0	0	0	0	0
발전88	0	0	0	0	0	0	0	0	0	0	0	0	0	0	0
발전89	0	0	0	0	0	0	0	0	0	0	0	0	0	0	0
발전90	0	0	0	0	0	0	0	0	0	0	0	0	0	0	0
발전91	0	0	0	0	0	0	0	0	0	0	0	0	0	0	0
발전92	0	0	0	0	0	0	0	0	0	0	0	0	0	0	0
발전93	0	0	0	0	0	0	0	0	0	0	0	0	0	0	0
발전94	0	0	0	0	0	0	0	0	0	0	0	0	0	0	0
발전95	0	0	0	0	0	0	0	0	0	0	0	0	0	0	0
발전96	0	0	0	0											



IV.

/ , EPRI

category

/ , /  
 , 5, 6, 7 8

5.

	1	2	3	4	1	2	3	4	1	2	3	1	2	3
125VDC	-	-	-	-	-	-	-	-	-	0.1	-	-	-	-
1	-	-	0.1	0.1	-	-	-	-	-	-	-	-	-	-
1	-	-	-	-	-	-	-	-	0.1	-	-	-	-	-
2	0.1	-	-	-	-	-	-	-	-	-	-	-	-	-
48VDC	-	-	-	-	-	-	-	-	-	-	-	0.1	-	-
가	-	0.1	-	-	-	-	-	-	0.1	-	-	0	-	-
	-	-	-	-	-	-	-	-	-	-	-	0.1	-	-
	0.1	-	0.1	-	-	-	-	-	-	-	-	-	-	-
ESFAS	-	-	-	-	-	-	0.2	-	-	-	-	-	-	-
	-	-	-	-	-	-	-	-	-	-	-	0.1	-	-
	-	0.1	-	-	-	-	-	-	-	-	-	-	-	-
	0.1	-	-	-	-	-	-	-	-	-	-	-	-	-
	0.1	-	0.1	-	-	-	-	-	0.2	-	-	0.1	-	-
	0.4	0.1	-	-	-	-	-	-	-	0.1	-	0.2	-	-
	0.1	0.2	-	0.3	-	-	-	-	0.2	0.3	-	0.1	-	-
	0.2	0.1	0.2	0.2	-	0.1	-	-	0.1	0.1	-	0.1	-	-
	-	0.1	0.3	0.1	-	-	-	-	-	-	-	-	-	-
RCS	-	0.1	0	-	-	-	-	-	-	-	-	0.4	-	0.8
RCS	0.1	-	0.1	0.1	-	0.1	-	-	-	-	-	-	-	-
	0.1	-	0.2	-	0.1	0.1	-	-	-	-	-	0.1	-	-
	0.3	0.1	0.1	0.1	0.1	0.3	-	-	-	0.1	-	0.3	0.5	-
	-	-	-	0.1	-	-	-	-	-	-	-	0.1	-	-
	-	-	-	-	-	0.1	-	-	-	-	-	-	-	-
	0.4	0.1	-	-	-	-	-	-	-	-	-	-	0.5	0.8
	0.2	0.9	0.2	0.1	0.3	0.2	0.5	0.8	0.3	-	0.7	-	-	-
	-	-	-	-	-	-	-	-	-	-	-	0.1	0.5	-
	0.1	-	-	-	-	0.1	-	0.3	-	-	-	-	0.5	-
	0.2	-	-	-	-	-	-	-	-	-	-	-	-	-
	-	-	-	-	-	-	-	-	-	-	-	0.1	-	-
	0.1	-	-	-	-	-	0.2	-	-	-	-	-	-	-
	0.6	0.6	0.5	0.1	0.3	0.3	0.2	0.3	0.2	-	-	0.1	-	-
	-	-	0.1	0.1	-	0.2	-	-	-	0.1	-	-	-	-
	0.1	0.1	0.1	0.3	0.3	0.3	-	-	0.1	0.1	-	0.4	-	-
	0.6	0.1	0.3	-	-	-	-	-	0.2	0.1	-	-	-	-
	0.1	0.1	0.2	-	-	-	-	-	-	-	-	-	-	-
	-	0.1	-	-	-	-	-	-	-	-	-	-	-	-
	0.4	0.1	0.1	0.1	-	-	-	0.3	0.1	-	-	0.3	0.5	0.8
	0.2	-	-	0.2	0.1	0.4	-	-	0.2	-	-	-	0.5	-
	0.1	-	-	-	-	-	-	-	-	-	-	-	-	-
	0.1	-	0.1	-	-	0.1	-	-	0.1	-	-	-	-	-
	0.1	-	0.3	0.3	0.3	-	-	-	0.1	-	-	-	-	-
	0.1	-	-	-	-	-	-	-	-	-	-	-	-	-
SG	0.2	0.1	-	-	-	0.1	-	-	-	-	-	0.1	-	-
SG	-	0	0.1	-	-	-	-	-	-	-	-	-	-	-
	0.1	0.1	-	-	-	-	-	-	-	-	-	-	-	-
	0.6	0.1	0.2	0.4	0.3	-	-	-	0.1	0.5	-	0.2	-	-
	-	0.1	-	-	-	-	-	-	-	-	-	-	-	-
	0.4	0.1	0.1	0.4	0.3	0.2	-	-	-	-	-	0.1	-	-
	0.1	-	-	-	-	-	-	-	-	-	-	-	-	-
	-	-	-	-	-	-	-	-	-	-	-	0.4	-	-
	-	-	-	-	0.1	-	-	-	-	-	-	-	-	-
Vital Bus	0.4	-	-	-	-	-	-	-	-	-	-	0.1	-	-
Non-vital Bus	0.1	-	-	-	0.1	-	-	-	-	-	-	-	-	-
Unknown	0.2	0.3	-	-	0.1	-	0.2	0.3	-	-	-	0.1	-	-

6. EPRI category

EPRI Category	1	2	3	4	1	2	3	4	1	2	3	
1. RCS	2	-	2	-	1	1	-	-	-	-	-	6
2.	-	-	-	-	-	-	-	-	-	-	-	0
3. &	5	13	2	1	4	2	2	1	3	1	1	35
4.	1	-	-	-	-	-	-	-	-	-	-	1
5. 1	1	1	1	1	-	2	-	-	-	-	-	6
6. 가	-	-	-	-	-	-	-	-	-	-	-	0
7. 가	-	-	-	-	-	-	-	-	1	-	-	1
8. 가	-	-	-	-	-	-	-	-	-	-	-	0
9.	-	-	-	-	-	-	-	-	-	-	-	0
10.	-	-	-	-	-	-	-	-	-	-	-	0
11. -CVCS	-	-	-	-	-	-	-	-	-	-	-	0
12.	-	-	-	-	-	-	-	-	-	-	-	0
13. RCP	1	-	-	-	-	-	-	-	-	-	-	1
14. RCS	2	-	-	-	-	-	-	-	-	-	-	2
15.	10	7	7	2	4	5	2	2	2	2	-	43
16.	3	1	1	2	-	1	-	-	-	-	-	8
17. (1 )	2	-	3	3	1	-	-	-	1	-	-	10
18.	1	1	-	-	2	1	-	-	-	-	-	5
19. 가(1 LOOP)	3	1	2	1	1	-	-	-	1	-	-	9
20. 가(All Loop)	-	-	-	-	-	-	-	-	-	-	-	0
21. ( )	2	1	-	1	1	1	-	-	-	-	-	6
22. ( )	2	1	-	-	-	1	-	-	-	-	-	4
23.	-	-	-	-	-	-	-	-	-	-	-	0
24.	-	-	-	-	-	-	-	-	-	-	-	0
25.	2	3	1	-	-	-	-	-	-	-	-	6
26.	3	-	-	-	-	1	-	-	-	-	-	4
27.	-	-	-	-	-	-	-	-	1	-	-	1
28. 2	-	1	-	-	-	-	-	-	-	-	-	1
29.	-	-	-	-	-	-	-	-	-	-	-	0
30.	-	-	-	1	-	-	-	-	-	-	-	1
31.	-	-	1	1	-	-	-	-	-	-	-	2
32.	-	-	-	-	-	-	-	-	-	-	-	0
33. / /	13	3	2	3	6	2	-	-	1	2	-	32
34.	20	5	6	1	-	1	1	1	5	-	-	40
35.	-	1	1	-	-	-	-	-	-	-	-	2
36. 가	-	1	-	-	-	-	-	-	-	-	-	1
37.	10	1	-	-	2	-	-	-	-	1	-	14
38. (Unknown Cause)	-	-	2	1	-	-	-	-	-	-	-	3
39.	7	3	2	4	1	4	1	3	-	2	-	27
40.	11	4	3	5	1	2	-	-	3	1	-	30
41.	1	-	-	-	-	-	-	-	-	-	-	1
42.	8	2	-	5	2	1	-	-	3	4	-	25
43.	19	14	12	11	11	10	4	3	9	9	1	103
44.	1	-	-	-	1	1	-	-	-	1	-	4
	<b>130</b>	<b>64</b>	<b>48</b>	<b>43</b>	<b>38</b>	<b>36</b>	<b>10</b>	<b>10</b>	<b>30</b>	<b>23</b>	<b>2</b>	<b>434</b>
) EPRI category category 가	41 category EPRI category PWR								42~44		1 2	

7.

	1	2	3	4	1	2	3	4	1	2	3	1	2	3
	2.5	0.4	0.9	0.3	0.7	0.8	0.5	0.5	0.1	0.3	-	0.4	-	1.6
	-	-	-	-	-	0.1	-	-	-	-	-	-	-	-
	1.3	1.2	1	0.6	0.4	0.6	-	-	1	0.1	-	1.1	-	-
	0.3	0.2	0.3	0.2	0.1	0.1	-	-	0.2	0.2	-	0.2	-	-
	-	0.6	0.1	-	-	0.1	-	-	-	0.2	-	0.3	-	-
	-	0.1	-	-	-	-	-	-	-	-	-	-	-	-
	0.6	0.1	0.1	0.4	0.1	0.2	-	-	0.3	0.5	-	0.4	-	-
	0.5	0.4	0.3	0.3	0.4	0.3	0.2	0.3	0.6	0.1	-	0.4	-	-
	0.1	-	-	-	-	-	-	-	-	-	-	-	-	0.8
	0.1	0.1	0.3	0.2	0.2	-	0.2	0.3	-	0.1	0.7	0.1	0.9	-
Unknown	1.3	0.6	0.2	0.8	0.4	0.3	0.5	0.8	-	-	-	0.8	1.9	-

8.

	1	2	3	4	5	6	7	8	9	10	11	12	13	14	15	16	17	18	19	
<b>1</b>	19	14	6	5	8	7	11	12	7	5	2	6	12	6	4	3	1	1	1	<b>130</b>
<b>2</b>	9	4	19	5	4	5	1	2	2	4	3	2	1	3	-	-	-	-	-	<b>64</b>
<b>3</b>	11	12	2	2	4	4	1	4	2	2	1	3	-	-	-	-	-	-	-	<b>48</b>
<b>4</b>	9	8	2	4	3	6	4	4	1	1	1	-	-	-	-	-	-	-	-	<b>43</b>
<b>1</b>	11	7	3	2	2	3	1	2	3	2	1	-	-	-	-	-	-	-	-	<b>37</b>
<b>2</b>	4	7	3	5	2	4	2	2	2	2	-	-	-	-	-	-	-	-	-	<b>33</b>
<b>3</b>	4	3	1	2	-	-	-	-	-	-	-	-	-	-	-	-	-	-	-	<b>10</b>
<b>4</b>	5	3	2	-	-	-	-	-	-	-	-	-	-	-	-	-	-	-	-	<b>10</b>
<b>1</b>	3	4	8	1	2	1	3	4	3	-	-	-	-	-	-	-	-	-	-	<b>29</b>
<b>2</b>	6	2	1	1	3	2	5	2	1	-	-	-	-	-	-	-	-	-	-	<b>23</b>
<b>3</b>	2	-	-	-	-	-	-	-	-	-	-	-	-	-	-	-	-	-	-	<b>2</b>

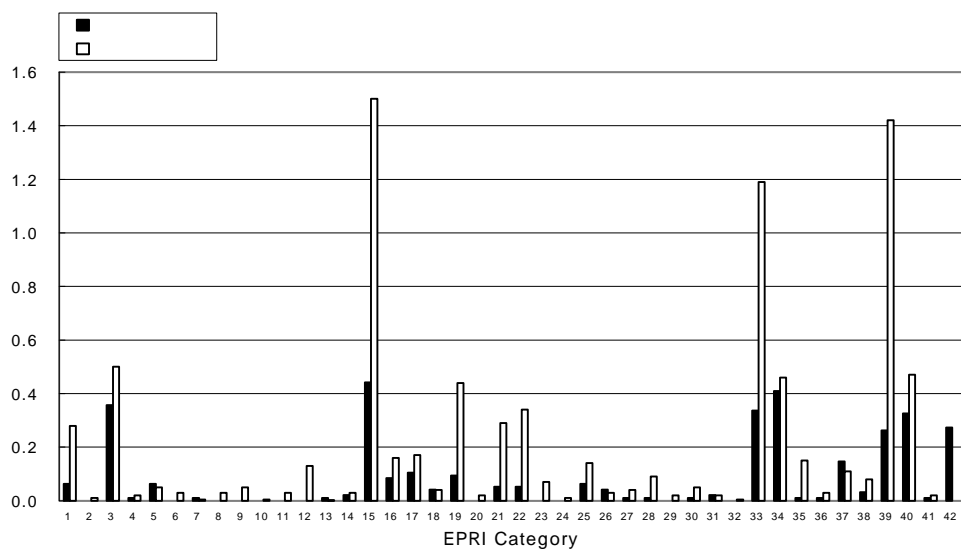
8

6 EPRI category

EPRI category

EPRI category

[5]



8.

EPRI category

5, 6, 7 8 8

● 5 , 56

가

● 7 ,

● 8 ,

● 8 , EPRI category

V.

가  
 400 , , 가  
 KTRIP .  
 , EPRI category  
 ,  
 가 ,  
 /  
 , 56  
 가  
 가  
 가  
 가  
 10~20 Ry 가 가  
 가 가  
 가 가  
 가 ,

[1] USNRC, "Development of Transient Initiating Event Frequencies for Use in Probabilistic Risk Assessments," NUREG/CR-3862, 1985.  
 [2] EPRI, "Frequency of Anticipated Transients, Part :3," EPRI NP-2230.  
 [3] , " , " 1999.  
 [4] , " , " 1999.  
 [5] USNRC, "Rates of Initiating Events at U.S. Nuclear Power Plants: 1987-1995," NUREG/CR-5750, 1999.